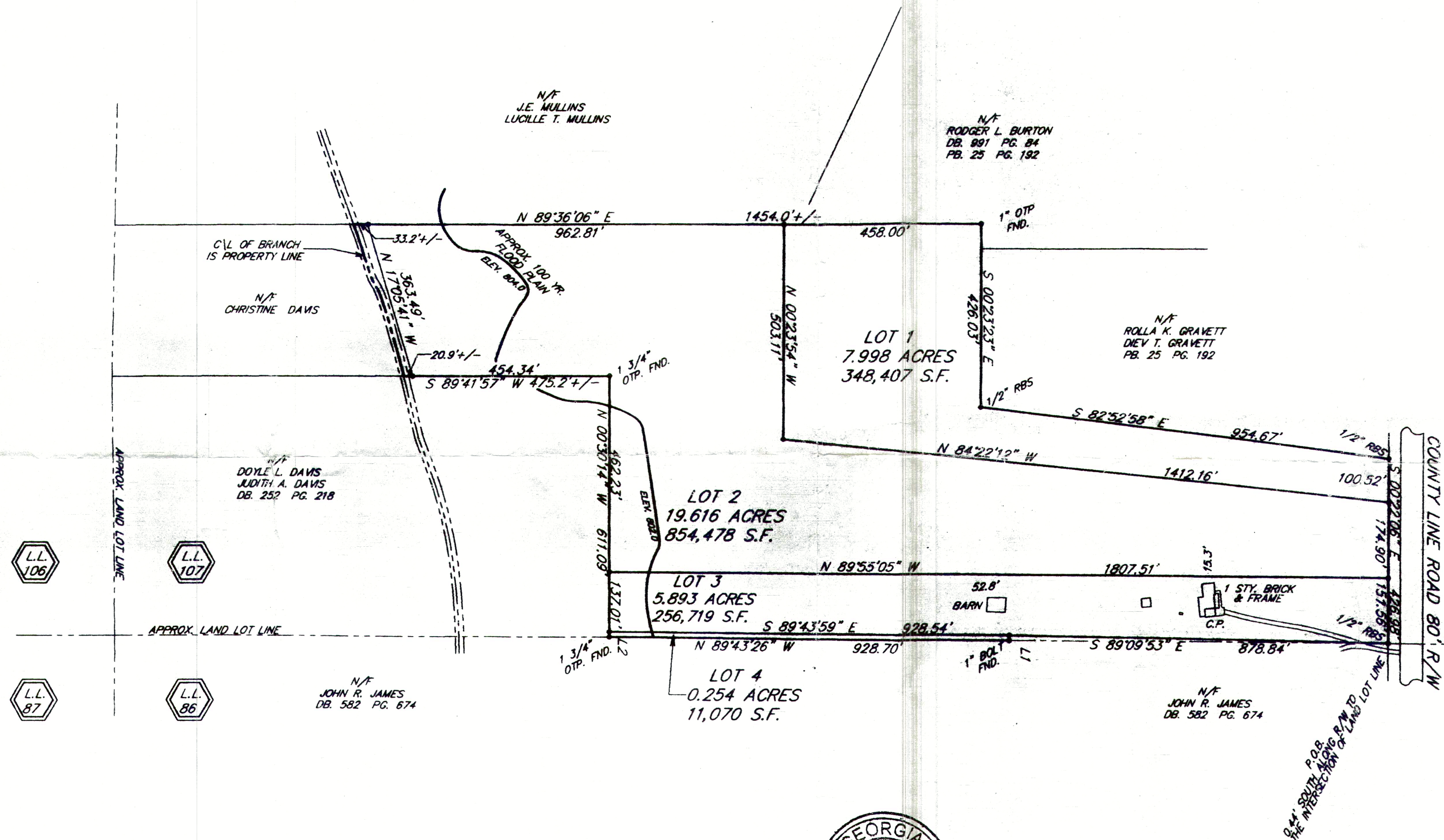


CURVE TABLE

LINE	DIRECTION	DISTANCE
L1	S 01°14'51" E	12.00'
L2	N 00°30'14" W	11.85'

LEGEND:

FL	= FLOW LINE
PP	= POWER POLE
YI	= YARD INLET
FH	= FIRE HYDRANT
IPS	= IRON PIN SET
IPF	= IRON PIN FOUND
CT	= CRIMP TOP
CO	= CLEAN OUT
SW	= SIDEWALK
BSL	= BUILDING SETBACK LINE
FOC	= FACE OF CURB
BOC	= BACK OF CURB
C&G	= CURB AND GUTTER
GW	= GUY WIRE
GM	= GAS METER
WM	= WATER METER
WV	= WATER VALVE
SSMH	= SANITARY SEWER MANHOLE
DI	= DROP INLET
CB	= CATCH BASIN
DMCB	= DOUBLE WING CATCH BASIN
SWCB	= SINGLE WING CATCH BASIN
SS LAT.	= SANITARY SEWER LATERAL
RCP	= REINFORCED CONCRETE PIPE
CMP	= CORRUGATED METAL PIPE
FES	= FLARED END SECTION
HW	= CONCRETE HEADWALL
JB	= JUNCTION BOX
SSE	= SANITARY SEWER EASEMENT
TW	= TOP WALL
LLL	= LAND LOT LINE
SDMH	= STORM DRAIN MANHOLE
SBMH	= SOUTHERN BELL MANHOLE
-W-	= WATER LINE
-SS-	= SANITARY SEWER LINE
-SD-	= STORM DRAIN LINE
-G-	= GAS LINE
-T-	= TELEPHONE LINE (UNDERGROUND)
-P-	= ELECTRIC LINE (UNDERGROUND)
EP	= EDGE OF PAVEMENT
CM	= CONCRETE MARKER
(930.0)	= EXISTING ELEVATION
930.0	= PROPOSED ELEVATION
LP	= LIGHT POLE
GV	= GAS VALVE



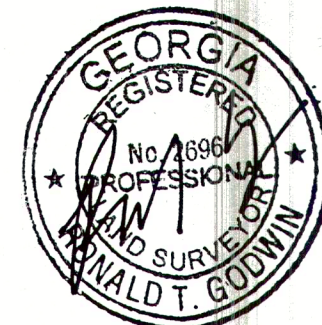
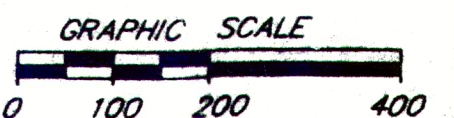
THE FIELD DATA UPON WHICH THIS PLAT IS BASED HAS A CLOSURE PRECISION OF ONE FOOT IN 42,167 FEET AND AN ANGULAR ERROR OF 00' 00" 02" PER ANGLE POINT AND HAS BEEN ADJUSTED USING THE LEAST SQUARES METHOD.

THIS PLAT HAS BEEN CALCULATED FOR CLOSURE AND IS FOUND TO BE ACCURATE WITHIN ONE FOOT IN 100,000+ FEET.

A PORTION OF THIS SITE IS LOCATED IN A FLOOD HAZARD AREA AS DEFINED BY THE FAYETTE COUNTY F.E.M.A. AND F.I.R.M. COMMUNITY PANEL NO. 1311320085 D. DATED MARCH 18, 1996.

EQUIPMENT UTILIZED --
ANGULAR -- TOPCON GTS-3
LINEAR -- TOPCON GTS-3 EDM

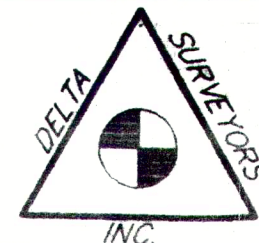
DECLARATION IS MADE TO ORIGINAL PURCHASER OF THE SURVEY. ANY USE BY THIRD PARTIES IS AT THEIR OWN RISK. SURVEY IS VALID ONLY IF PRINT HAS ORIGINAL SEAL AND ORIGINAL SIGNATURE OF SURVEYOR.



DELTA SURVEYORS, INC.

P.O. BOX 571
FAYETTEVILLE, GA. 30214

770/460/9342



PREPARED FOR:

HUBERT W. HOWELL

SUBDIVISION:		P.B.	Pg.
LOT:	LAND LOT: 107	DATE:	2/16/99
BLOCK:	DISTRICT: 5TH	REVISED:	
SCALE: 1" = 200'	COUNTY: FAYETTE, GA.	JOB NO:	88-0240